

MUSEUM OF THE EARTH
PALEONTOLOGICAL RESEARCH INSTITUTION



*Fig. 1-5. Ex Museo docifis. Andrae, pharmacop. Hannoverani. Fig. 6. Ex Museo
Excell. ac experientifs. D. Güntheri, Serenifs. Ducis Saxe-Coburg. medici
aulici et practici civitatis Cahlenfis.*

ANNUAL REPORT | 2004 - 2005

President's Message

A few years ago, in a jet-lagged state, my family and I were taking a taxi from the airport to our hotel in Rome. As the driver weaved in and out of traffic in alarmingly reckless fashion, he commented, "In Rome, traffic lanes are like a museum – for looking at, not using!"

I've just completed a year of sabbatical ("research reassignment," as the North Carolina university system calls it) filled with travel – Argentina, China, Iceland, and five trips to Europe. During my travels I visited paleontology museums and/or examined fossil mollusk collections at universities or natural history institutions on four different continents. I found a wide range of quality and conditions at these various locations. I wandered museum corridors empty of visitors and containing exhibits that looked like they had not been updated in decades (if not centuries!). I also visited vibrant museums, like those in Trelew, Patagonia, and Shenzhen, China, with stunning fossils, creative exhibits, and engrossed patrons. These successful institutions were obviously in violation of the philosophy that museums are for looking, not using.

I couldn't help comparing every museum I visited with the one nearest and dearest to my heart: the Paleontological Research Institution's new Museum of the Earth. You know what? We came off rather well. We may not have the dinosaurs that Argentina and China can muster, but we have a spectacular right whale we can dine under and a nearly complete mastodon with a national reputation (thanks, U-Haul!). We have spectacular invertebrate fossils from the region and around the globe. We have a 500-foot-long mural artistically depicting the history of life over the past 544 million years. We have audiovisual theaters, discovery stations, a specimen preparation lab open to viewing, and exciting events year-round that reach out to the community and schools. And we have had more than 80,000 visitors since the Museum opened. Clearly, PRI's philosophy is that museums are for using, not just for looking!

And things just keep getting better and better! The mutually beneficial new affiliation of PRI with Cornell; new grants to computerize and make the collections more accessible; new grants to support the education and outreach function of PRI and the Museum... all these developments enhance PRI's ability to meet our mission "to increase and disseminate knowledge about the history and evolution of the Earth and its life."

Museums are for using! Come use ours!

– Patricia H. Kelley



Paleontological Research Institution

FOUNDED 1932

BOARD OF TRUSTEES

Officers

Patricia H. Kelley, President

David H. Taube, First Vice President

Philip Bartels, Second Vice President

Patricia A. Johnson, Treasurer

Shirley K. Egan, Secretary

Term Expiring 6/30/06

William L. Crepet, Ithaca, NY

Constance M. Soja, Hamilton, NY

Peter B. Stifel, Easton, MD

Arthur Waterman, New Orleans, LA

Term Expiring 6/30/07

John D. Allen, Syracuse, NY

Philip Bartels, Riverside, CT

Larry Baum, Ithaca, NY

Shirley K. Egan, Aurora, NY

Patricia A. Johnson, Ithaca, NY

John Pojeta Jr, Rockville, MD

Mary M. Shuford, Brooklyn, NY

Term Expiring 6/30/08

Loren E. Babcock, Columbus, OH

Thomas W. Bruce, Ithaca, NY

James M. Cordes, Ithaca, NY

J. Thomas Dutro, Jr., Washington, DC

W. Kent Fuchs, Ithaca, NY

Howard P. Hartnett, Moravia, NY

Teresa E. Jordan, Ithaca, NY

Patricia H. Kelley, Wilmington, NC

D. Jeffrey Over, Geneseo, NY

Philip Proujansky, Ithaca, NY

David H. Taube, Ithaca, NY

Term Expiring 12/31/08

Carolyn N. Ainslie, Ithaca, NY

Rodney M. Feldmann, Kent, OH

William Perks, Corning, NY

Trustee Emeritus

Robert T. Horn Jr, Ithaca, NY

Harry G. Lee, Jacksonville, FL

Harry A. Leffingwell, Laguna Beach, CA

Robert M. Linsley, Hamilton, NY

Amy R. McCune, Ithaca, NY

Samuel T. Pees, Meadville, PA

Edward B. Picou, Jr., New Orleans, LA

James E. Sorauf, Tarpon Springs, FL

John C. Steinmetz, Bloomington, IN

William P. S. Ventress, Lexington, OK

Thomas E. Whiteley, Rochester, NY

Staff

Warren Allmon, Director

Demetra Brodsky, Director of Exhibits/Art Director

Carlyn Buckler, Education Associate

Emily Butler, Assistant to the Director

Elaine Garrett, Exhibits Associate

Michael Griswold, Facilities Manager

Jennifer Hodgson, Collections Database Manager

Elizabeth Humbert, Teacher Resources Manager

Michael Lucas, Director of Finance and Administration

Rhonda Moyer, Office Manager

Amy Naim, Director of Marketing

Alicia Reynolds, Assistant Director of Museum Operations

Bridget Rigas-Gangi, Director of Development

Robert Ross, Director of Education

Molly Sax, Educational Programs Manager

Pete St. John, Exhibits Manager

Jillian Timm, Development Assistant

Gail Walker, Director of Museum Operations

The Paleontological Research Institution
1259 Trumansburg Road, Ithaca NY 14850
Telephone 607.273.6623
Fax 607.273.6620

Table of Contents

PRESIDENT'S MESSAGE 1

DIRECTOR'S MESSAGE 3

EXHIBITS 4

EDUCATION 6

VOLUNTEERS 8

RESEARCH 8

COLLECTIONS 10

AWARDS 12

PUBLICATIONS 12

CORNELL RELATIONS 13

PHILANTHROPY 14

MEMBERSHIP 18

FINANCE 23

On the cover: Illustrations of trilobites and an ammonoid from an unidentified publication, ca. late eighteenth century, in the PRI archives. Back: original, pen and watercolor on paper. Front: printed plate. Inside covers: Mural from Evolution exhibit in the Museum of the Earth. Created by Jeff Kennedy Associates.

Copyright © 2006 Paleontological Research Institution
Editors: Amy Naim and Bridget Rigas-Gangi
Design and layout: Demetra Brodsky and Emily Butler
Printed on recycled paper by Arnold Printing, Ithaca, NY
Date of report: February 2006



Director's Message

One of the most important events of the past year for PRI was the signing of a formal agreement of affiliation with Cornell University, ending more than 70 years of official estrangement. Although this agreement in the short term simply recognizes the growing informal collaboration between Cornell and PRI that has been established over the past 13 years, it is an opportune moment to reflect on what a closer connection may mean in the longer term.

In the middle of the nineteenth century, no American college or university was considered truly well equipped unless it had some kind of natural history museum. This was because at this time museums were at the cutting edge of natural science and college-level instruction. Fully in line with the times, Cornell University had a natural history museum, almost from the school's founding in 1865. It was located in McGraw Hall, today the home of the departments of History, Government, and Anthropology.

The museum held the university's collections of rocks and minerals, fossils, zoological specimens, and even an Egyptian mummy. Many of these collections had been purchased by the University's founder, Ezra Cornell, as essential needs for the new educational enterprise. For example, he purchased a large collection of fossils from Ezekiel Jewett. According to at least one historian, Jewett had tried to sell the collection to Yale for \$7,500, but Yale did not have the funds, so Jewett increased the price to \$10,000, and Cornell bought it. Similarly, Ithaca physician Wesley Newcomb sold Cornell a major collection of modern shells, reputed at the time to be the third largest in the country. Another major element in the museum was the collection of Ward's casts. These were plaster copies of famous fossils – from ichthyosaurs and plesiosaurs -- to a 12-foot ground sloth skeleton -- purchased from Ward's Natural Science Establishment in Rochester, NY. The museum and its collections were used on an ongoing basis by faculty and students in biology, geology, and anthropology throughout the rest of the century.

But times change. By the early decades of the twentieth century, biology was becoming more of an experimental laboratory science, with less emphasis on insights that could be derived from museum specimens. With only very few exceptions around the country, museums were no longer at the forefront of science and teaching. Cornell's natural history museum disappeared. Today McGraw Hall's once grand three-story atrium is filled in with floors of offices and classrooms. Only a few bronze banisters remain, now in the possession of the Department of Earth and Atmospheric Sciences. The collections were dispersed across campus to various departments and colleges. Some Cornell collections, such as insects and plants,

were well cared for and they formed the growing nuclei of what became flourishing academic programs. Others – such as animal fossils and shells – did less well. The Ward's casts fared least well; most of them completely vanished.

All university museums were subject to this phase of diminished stature. Those at Dartmouth and Princeton suffered the same fate as Cornell's. Those at others of Cornell's peer institutions, such as Harvard, Yale, Berkeley, and Michigan, survived and today are thriving academic units of their respective universities. This is because natural history museums are in many ways once again at the cutting edge of natural science. They are centers for research in biodiversity, genomics, systematic and evolutionary biology, and global change, all fields that cannot be pursued without access to large collections.

Over the past decade, two important parts of this natural history heritage at Cornell have been restored on a much grander scale. In April of 2003, the Cornell Laboratory of Ornithology opened its 92,000 square foot Imogene Powers Johnson Center for Birds and Biodiversity. This facility – among its many other functions – serves as a splendid new home to the Cornell Museum of Vertebrates, which cares for Cornell's large collections of fish, birds, mammals, reptiles, and amphibians in state-of-the-art space. These collections are now much more available for use by researchers and students than they had been in many decades. In September 2003, PRI opened the Museum of the Earth, which initiated what we hope is the final phase of a decade-long effort to reunite PRI and Cornell animal fossil and shell collections and make them available not only to the scientific and University communities, but also to the general public.

Together with Cornell departments holding natural history collections, from Plant Biology to Entomology, the new Lab of Ornithology and the new PRI round out a *distributed* museum of natural history for Cornell. Together, these collections hold millions of specimens and are among the largest and best in the nation both in their respective areas and as a whole. They strengthen the ability of Cornell students, staff, and faculty to pursue research on some of the major issues of our time, while their public outreach programs and facilities – such as the Museum of the Earth – allow the general public to share in the experiences of wonder and fascination that only authentic objects from nature can provide.

–Warren D. Allmon

Exhibits

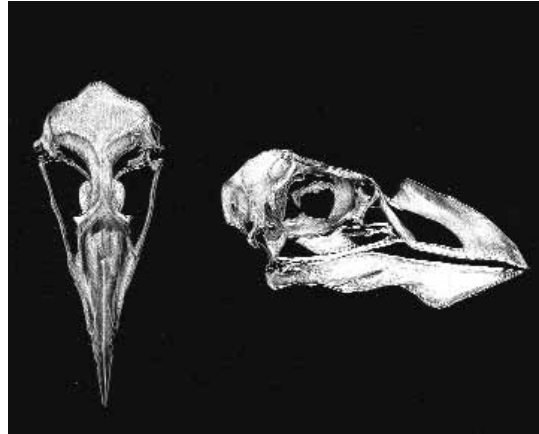
Exhibits are an essential part of activity in the Museum of the Earth, enabling staff to showcase PRI's vast existing collection as well as highlight new discoveries, knowledge, and artistic partnerships that further our mission to share the history of life with the public.

Temporary Exhibits 2004 - 2005

Skulls and Sketches

October 15, 2004 - December 31, 2005

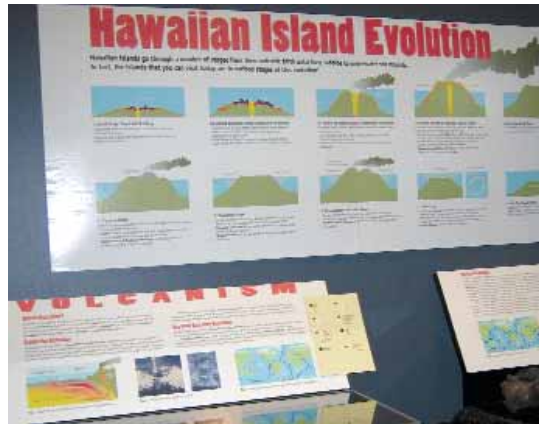
An exhibit of sketches and scratchboard work by Ithaca artist Katrina Binkewicz, combined with skeletal specimens from the collections of the Cornell Museum of Vertebrates that inspired her work.



Hawaii Volcanoes

May 20, 2005 - September 15, 2005

Prepared in conjunction with the Earth and Atmospheric Sciences Department at Cornell University, which offers a one semester field study course on the Hawaiian Islands, this exhibit featured Hawaiian basalt including a touchable specimen of Pahoehoe (the Hawaiian term for one type of Hawaiian lava rock).



Creepy Crawlies from Ancient Seas

January 29, 2005 - June 15, 2005

An exhibit of photographs by PRI Trustee Emeritus Thomas Whiteley, co-author and photographer of the spectacular book *Trilobites of New York State*, published by Cornell University Press and PRI in 2002.

Snake Stones of Ammon: the World of Ammonoids

July 15, 2005 - October 15, 2005

This most ambitious exhibit since the Museum's opening featured the beautiful coiled shells of ammonoids and explored these spectacular fossils through the interaction of art, science and history. The exhibit was funded by a grant from the Tompkins County Tourism Grants Program.



Additions to the Permanent Exhibits

Right Whale #2030

July 5, 2004

Thanks to the generous support of the Nelson B. Delavan Foundation, we completed the permanent exhibit on the tragic death and significance of Right Whale #2030. This majestic mammal's skeleton presents a stunning backdrop for the exhibit, which includes a short film by Ithaca filmmaker David O. Brown. The film contains footage of her attempted rescue, and an interpretive panel highlights her journey to the Museum as well as the history of right whales.



Dino Dig

June 18, 2005

This new outdoor exhibit allows children under 5 to explore dinosaur science and the field of paleontology by participating in a variety of dinosaur digs. The exhibit engages both children and adults, creating a fascinating way for families to learn together. This outdoor exhibit was created with active participation and a grant from Women in Science at Cornell University.



Education

Programming

PRI educational programming helps make the history of the Earth, and the science by which we understand it, accessible to audiences of all ages and backgrounds. In FY05, PRI provided over 300 interactive presentations, many of them at the Museum of the Earth, to school classes, exploring how we know about the geologic past. PRI also holds outreach programs throughout central New York.

Twenty presentations were held as part of the public Natural History at Noon series, featuring speakers from Cornell, Ithaca College, and elsewhere. PRI's Education Department also serves Museum visitors through Museum tours and contact with PRI volunteers at hands-on "Discovery Lab" stations in the Museum exhibits. Altogether PRI education programs reached approximately 7,600 students in FY05.

Educational Walks and Summer Field Trips

In Summer 2004, PRI was honored to name the James Potorti Memorial Interpretive Walk series, the Friday morning tours in local Finger Lakes State Parks (Taughannock, Buttermilk, Treman, and Watkins Glen), remember Ithaca native James Potorti, lost in September 11th attacks on the World Trade Center. This was made possible by his widow Nikki Stern.

PRI held monthly fossil collecting trips from May to September. PRI also hosts special events such as the **Dinosaur Holiday Party** in December and Earth Day in April. **During Earth Science Week** in October, PRI hosted **Teacher Resource Day**, providing fossils and publications for regional teachers.

PRI paleontologist and Director of Education Rob Ross hosted a trip to discover the new Dinosaur Exhibit, *Ancient Fossils, New Discoveries* at the American Museum of the Natural History in New York.

Educational Funding

PRI received funding during 2004-2005 from the National Science Foundation for several new projects: an expansion of PRI's popular *Teacher-Friendly Guide to the Geology of the Northeastern U.S.*, a two-year partnership with the after school program at the downtown Greater Ithaca Activities Center (GIAC), and a project to make recommendations for improving national informal geoscience education.

Natural History at Noon Lecture Series

Highlights from the 2004 – 2005 season:

Saturday, May 21
Dan Burgevin, Muralist, Museum of the Earth
The Art of Trilobites and their Predators

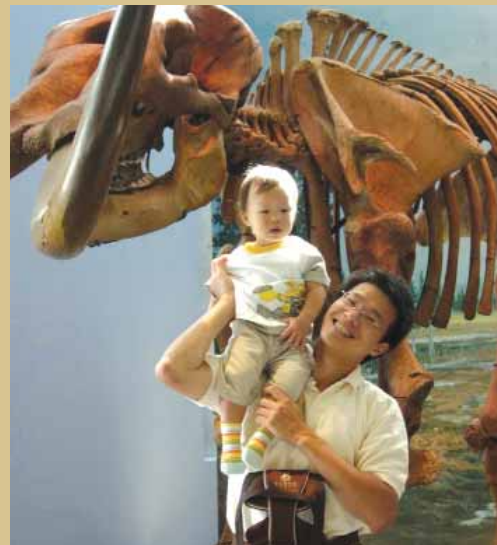
Saturday, May 7
Dr. Jason Hamilton, Ithaca College
The quest for a sustainable world – and how that involves you

Saturday, April 16
Dr. Ed Buckler, Cornell University
The History of Corn: Maize Diversity and Domestication

Saturday, April 9
Bill Nye, Museum of the Earth
Book Signing, *Great Big Dinosaur Dig*

Saturday, April 2
Dr. James Leibherr, Cornell University
Hawaiian Insects: Discovering Hawaiian Hyperdiversity.

Saturday, March 5
Dr. Michael Rogers, Ithaca College
What the Earth's Magnetic Field Can Tell You About Things Beneath the Ground.



Public Outreach Days

National Earth Science Week Celebration, October 16, 2004

The Museum of the Earth hosted a day of discovery with activities to celebrate National Earth Science Week including finding, sorting, and analyzing fossil specimens. Part of the celebration included a Natural History at Noon lecture, "Mass Extinctions: Did the Big Shocks come from Outer Space or from Within?" presented by Dr. Jason Phipps Morgan, Earth and Atmospheric Sciences at Cornell University.

Earth Day Celebration, April 23, 2005

Activities for the whole family, including the Ithaca Family Reading Partnership's Story Globe, Cornell University's Eco Players performing Dr. Seuss' *The Lorax*, composting demonstrations, *Project Wild* activities, recycled arts and crafts, and much more. With any admission to the Museum of the Earth during the month of April, visitors received a free coupon to the Earth Day Celebration. This included admission to our 2nd Annual Earth Day evening lecture by PRI Director Dr. Warren Allmon.

3rd Annual Community Day, Saturday, May 14, 2005

The Museum of the Earth hosted its 3rd Annual Community Day from 11am-4pm on Saturday in conjunction with the Discovery Trial's Discovery Month. Special events for the day included Museum tours and paleo-activities such as Mystery Fossil and Fossil Impressions, staff-led art fun, music, 10% off shopping in the Museum Store, ice cream by Ithaca's own Purity Ice Cream Co., and food by Ralph's Ribs.



PRI would like to thank the following foundations for their support of our education programs in 2004-2005.

American Association of Petroleum Geologists Foundation

Citigroup Foundation

Childress Foundation

Gannett Foundation

National Science Foundation

New York State Council for the Arts

Robert G. and Jane V. Engel Foundation

Tompkins Charitable Gift Fund

Tompkins County Tourism Grants Program

Walmart Foundation

Volunteers

Volunteers are an essential part of PRI and the Museum of the Earth. Every department of the Institution depends on the generosity of volunteers who give their time and energy working in the Museum's discovery labs, managing our library volumes, curating collections, teaching museum visitors, and mentoring new volunteers. Altogether, volunteers donated over 14,000 hours to PRI during 2004-2005.

Michael Adsitt
Courtney Alexander
Fancesca Allaby
Vauda Allmon
Danielle Ameen
Jim Baines
Curt Banta
Patrick Brennan
Carlyn Buckler
Al Burkhardt
Dick Burlew
Peg Burlew
Eric Chapman
Dom Ciaschi
Henry Dalrymple
Barbara Dimock
Mandi Druso

Lenore Durkee
Eniko Farkas
Jessica Fox
David Garman
Tiffany Hall
Ruth Hall
Jeremy Herz
Claire Herz
Barbara Heslip
Graham Heslip
Jen Hodgson
Jean Houghton
Mickie Jauquet
Damen Kannus
Bill Klose
Frankie Kozlowski
Michael Li

Alanna Li
Curt Lindy
Michael Lindy
Cynthia McClain
Phyllis McNeill
Lauren McPhillips
J. Tyson Merrill
Peter Mulcahy
Lucy Norman
Amber Peterson-Harding
Deb Ploete
Alison Reissman
Paul Rice
Kathryn Ritchie
Jenna Rose
Kriselle Santos
Peter Sax

Danielle Schappi
Jaclyn Shaw
Jackie Smith
Nick Sullivan
Victoria Tesoniero
Rekha Thammana
Renee Thomas
Alicia Thomas
Jay Tinker
Jennifer Tran
Cathy Vidler
Heather Yager
Jingwei Zhang
Dorothy Zimmer

Research

Research is fundamental to what PRI is all about. Although the Museum of the Earth now occupies a significant amount of the staff's time, the Institution continues to pursue and support basic research and publication -- in paleontology, geology, evolutionary biology, and science education -- by both staff and affiliated graduate and undergraduate students at Cornell.

Between July 1, 2004 and June 30, 2005, the following titles were published or presented by PRI staff and affiliated Cornell students:

Allmon, W.D., and R.M. Ross, 2004, Earth system science and the new Museum of the Earth. *American Paleontologist*, 12(1): 9-12.

Allmon, W.D., 2004, A Leviathan of Our Own. The Tragic and Amazing Story of North Atlantic Right Whale #2030. Special Publication No. 25, Paleontological Research Institution, Ithaca, NY, 69 pp.

Allmon, W.D., 2004, Invertebrates (in Review of year 2003 research in earth science). *Geotimes*, 49(7): 38-39. (extended version at www.geotimes.org)

Allmon, W.D., 2004, Googling *Turritella*, or the present and future value of the web for paleontological research. *Paleontologia Electronica* 7.2.3.

Allmon, W.D., 2004, A compendium of species of turritelline gastropods, Cretaceous to Recent. Version 1.0 (www.priweb.org/Research/Master%20List%20Species%20Database.xls)

Allmon, W.D., 2004, The Cretaceous marine nutrient increase and the initial diversification of turritelline gastropods. *Geological Society of America, Abstracts with Programs* 36(5): 526.

Allmon, W.D., 2005, (review of) *Cenozoic Seas. The View from Eastern North America*, by Edward J. Petuch. *Palaios*, 20(2): 208-209.

Allmon, W.D., 2005, *Frontiers of paleontology. Geotimes* 50(2): 7.

Allmon, W.D., 2005, The importance of museum collections in paleobiology. *Paleobiology* 31(1): 1-5.

Allmon, W.D., 2005, Profusion and plenitude: what is the connection between abundance and speciation? North American Paleontology Convention, Abstracts. *PaleoBios* (Museum of Paleontology, University of California, Berkeley), 25, suppl. to no. 2, pp. 12-13.

Allmon, W.D., 2005, Paleontology of "*Turritella agate*," a pleurocerid gastropod-dominated assemblage from the Eocene Green River Formation of Wyoming. *Geological Society of America, Northeastern Section, Abstracts with Programs* 37(1):19.

Burr, S.A., 2004, Micromorphology and trace metal content as indicators of bleaching in skeletons of modern and Holocene corals. *Geological Society of America, Abstracts with Programs* 36(5): 20.

Ebert, J.R., Kluge, S., Dolphin, G., Ross, R.M., and Dawson, J., 2004, Report on the State of Earth Science Education in New York, 15 pp. (www.bedford.k12.ny.us/flhs/science/stevek/revolution/default.html)

Ebert, J.R., Kluge, S., Ross, R.M., Dawson, J., and Dolphin, G., 2005, New York State and the Second Revolution in Earth and Space Science Education: Assessment of Key Issues and a Call to Arms. *Geological Society of America Abstracts with Programs*, 37(1):10.

Harnik, P.G. and Ross, R.M., 2004, Models of inquiry-based outreach to urban elementary schools, *Journal of Geoscience Education* 52(5): 420-428

Hendricks, J., and G. P. Dietl, 2004, Is there a survival-related advantage of sinistral coiling in marine snails? *Geological Society of America, Abstracts with Programs* 36(5): 480.

Ross, R.M., and W.D. Allmon, 2005, Use of local geology and modern analogs in museum-based geoscience education to foster Earth science literacy. *Geological Society of America, Northeastern Section, Abstracts with Programs* 37(1):20.

Ross, R.M., J. Sherpa, J. Chiment, W.D. Allmon, and P. Nester, 2004, Science from the Mastodon Matrix Project: involving classrooms and community groups in authentic discovery. *Geological Society of America, Abstracts with Programs* 36(5): 420.

Ross, R. M., and W.D. Allmon, 2004, CHRONOS as an educational tool in museums and science centers. *Geological Society of America, Abstracts with Programs* 36(5): 152.

Ross, R.M., Sherpa, J.M., Chiment, J.J., Allmon, W.D., Nester, P.L., 2004, Science from the Mastodon Matrix Project: Involving classrooms and community groups in authentic discovery. *Geological Society of America Abstracts with Programs*, 36(5): 420.

Ross, R.M. and Allmon, W.D., 2005, Use of local geology and modern analogs in museum-based geoscience education to foster Earth science literacy. *Geological Society of America Abstracts with Programs*, 37(1): 20.

Ross, R.M. and Allmon, W.D., 2004, CHRONOS as an educational tool in museums and science centers. *Geological Society of America Abstracts with Programs*, 36(5):152.

Smith, U.E., J. Todd, and N. McLeod, 2004, Applying geometric morphometrics to sibling species of *Polystira* (Gastropoda: Turridae). *Geological Society of America, Abstracts w/Programs* 36(5):316.

Stapleton, M.A., R.M. Ross, W.D. Allmon, and P.G. Harnik, 2004, Discovery labs at the Museum of the Earth: public labs for discovery and inquiry. *Geological Society of America, Abstracts with Programs* 36(5):349.

Wasserman, S. and Ross, R.M., 2004, Elementary school students undertake the Mastodon Matrix Project: Case example of a research partnership. *Geological Society of America Abstracts with Programs*, 36(5):420.



Collections

Caring for specimen collections is one of the major reasons PRI was founded more than seventy years ago, and one of the reasons for its continuing importance today. PRI's research collections – which at approximately 2.5 million specimens are among the largest in the United States – are a major national research resource for paleontology, and they also provide raw material for the Institution's extensive programs of exhibits and education, in the Museum of the Earth and beyond.

Major strides were made in 2004-2005 in specimen curation, thanks mostly to the hard work of volunteers and interns. Long-time specimen donor and volunteer Bill Klose continued to work as an essentially full-time staff member and the core of our current collections staff, while we search for a full-time Collections Manager.

In early 2005, PRI was awarded a \$244,000 grant from the National Science Foundation to begin the long-delayed computerization of a portion of its collections. Jennifer Hodgson, PRI's new Collections Database Manager, will be spending the next three years entering information and images of the most important part of PRI's collection – the Type Collection, composed of those specimens that have been published in the scientific literature. A supplement to the grant allowed us to hire Verity Whalen to assist with the process. In 2006 data and images from the PRI Type Collection will be available online.



The following individuals donated specimens to the PRI collections between 7/1/04 and 6/30/05:

- | | |
|---------------------|-----------------------|
| Youseff Allam | Lloyd Gunther |
| Warren Allmon | Les Heinzl |
| Tom Andrus | William Klose |
| Donald Badman | Alexandra Moore |
| John Balliett | William Rader |
| Merry Jo Bauer | Mitchell Ripley |
| John Cisne | Robert Ross |
| Roger Cuffey | James Rothenberg |
| Louis Derry | James Sorauf |
| Liselotte Dingerkus | George Stone |
| Gerald Gunderson | William & Wende Young |

Awards

Every year, PRI presents several awards, designed to recognize and encourage excellence in paleontology, particularly systematic paleontology (the branch of the discipline concerned with the description and analysis of the diversity of ancient life), across a broad spectrum of practitioners.

The Gilbert Harris Award is presented annually to an individual who has achieved special excellence in the field of systematic paleontology. The 2004-2005 award was presented to LouElla Saul of the Natural History Museum of Los Angeles County, on November 8, 2004 at the Friends of PRI Reception at the annual meeting of the Geological Society of America in Denver. Complete citations for all previous recipients of the Harris award can be found at www.priweb.org.

PRI's Student Award, consisting of a cash grant of \$500, is given annually to a full-time graduate student for work in any area of systematic paleontology. The 2005 Student award was given to Kate Bromfield of the Centre for Marine Studies of the University of Queensland in Brisbane, Australia for her work on "Evolution of coral species over the Miocene-Pliocene boundary across the Indo-Pacific Region".

Publications

PRI continues to produce high-quality publications for audiences ranging from professional scientists to preschoolers. PRI's flagship technical publication, *Bulletins of American Paleontology* (founded in 1895, and the oldest paleontological journal in America) continues its reputation as among the world's most respected monographic journals in the field, and continues to attract contributors from across the U.S. and beyond.

During the past year, the Institution's quarterly members' magazine, *American Paleontologist*, continued its transformation from a modest newsletter to a national-caliber magazine of Earth science, with the ongoing addition of new features, more advertising, and more pages.

Our newsletter for youngsters, *Fossil Stuff*, expanded from two to four issues a year, bringing information and fun about paleontology and geology to younger readers.

PRI's best-selling publication ever, *Ithaca is Gorges: A Guide to the Geology of the Ithaca Area* by PRI Director Warren Allmon and Director of Education Rob Ross, appeared in its third edition, having sold more than 4,000 copies since it first appeared in 1998.

Between July 1, 2004 and June 30, 2005, PRI published the following issues of *Bulletins of American Paleontology*:

Stilwell, J.D., W.J. Zinsmeister, and A.E. Olenik, 2004, Early Paleocene mollusks of Antarctica: systematics, paleoecology and paleobiogeographic significance. *Bulletins of American Paleontology* no. 367, 89 p., published Dec. 30, 2004

Webster, G.D., C.G. Maples, G.D. Sevastopulo, T. Frest, and J.A. Waters, 2004, Carboniferous (Viséan-Moscovian) echinoderms from the Béchar Basin area of western Algeria. *Bulletins of American Paleontology* no. 368, 98 p., published Dec. 30, 2004

Jung, P., The genus *Lepicythara* (Gastropoda, Turridae) from the Neogene and Pleistocene of tropical America. *Bulletins of American Paleontology* no. 366, 75 pages (published Feb. 25, 2005).

Relations with Cornell University

PRI had its origins in the personal conflict between Gilbert Harris and Cornell University. After teaching at Cornell for 40 years, Harris wanted assurances that the University would care for his collections, library, and printing enterprise in perpetuity. When Cornell demurred, Harris founded his own scientific organization in 1932, and PRI was chartered by the State of New York in 1936. For most of the twentieth century there were only slight connections between the two institutions.

On November 20, 2004, however, this long estrangement ended as PRI and Cornell signed a formal agreement of affiliation. The agreement leaves PRI a separate and free-standing organization, but it opens the door to strengthening of the numerous interactions with the University that have developed over the past thirteen years. In addition to the already-existing interactions, such as PRI's housing of Cornell collections and PRI staff teaching at both the graduate and undergraduate levels, the affiliation has expanded awareness of PRI on campus, leading to increased usage of the Museum of the Earth by Cornell classes, as well as cooperation on marketing and public relations and discussions about the future of the PRI Research Library.

The affiliation is not the end of a process but a beginning. The future lies in strengthening the ties that have already been established, and expanding PRI's ability to serve growing and diverse audiences, from Cornell to far beyond Ithaca. No one can know what would have happened had Gilbert Harris not left Cornell in a huff in 1932, but perhaps he would be pleased and proud that the University of which he was so long a part and the little institution to which he dedicated the last quarter of his life are now reunited in a way that will benefit both as well as society at large.

Community Accessibility

PRI and the Museum of the Earth are committed to making Earth science more accessible to everyone regardless of means. To ensure that those of limited resources and those with special needs have access to exhibits and programming, PRI and the Museum of the Earth created the Community Accessibility Program.

The Community Accessibility Program offers Agency memberships for human services agencies, free days (third Sundays in January, February and March), a Family Membership Essay Contest, and our Annual Community Day, held every May.



2004-2005 Media Coverage

International

Giornale dell'Architettura

National

Wall Street Journal
Cornell Alumni Magazine
The New York Times
Metropolis Magazine
Architectural Record

Regional

Press and Sun Bulletin
(Binghamton)
Cortland Standard
Syracuse Times
New York Newsday

Local

Ithaca Journal
Ithaca Times
Ithaca Child
Cornell Daily Sun
Trumansburg Free Press

Community Advisory Board

Michelle Benedict-Jones
Matthew Besemer
Susan Blumenthal
James Brown
Richard Driscoll
Audrey Edelman
Howard Evans
Richard Farr
Gary Ferguson
Molly Fitzpatrick
Marcia Fort
Keefe Gorman
John Gutenberger
Anthony Ingraham
Susan Johnston
Jean McPheeters
Philip Mott
Laurie Roberts
Franklin Robinson
Ursula Russ
Charles Trautmann
Carol Travis
Gary Woloszyn
Jeanne Yarussi

Philanthropy at PRI and the Museum of the Earth

As the Museum of the Earth embarked on its second year, PRI worked to strengthen our presence in the Finger Lakes community while nurturing our existing relationships. The Institution remains dedicated to its members, volunteers, Community Advisory Board, Board of Trustees, and the scientific community; who together make our work in increasing science literacy possible.

The 2005 fiscal year presented many development opportunities. The recent affiliation with Cornell brought both an increased service to the University and a broadened awareness of PRI and the Museum of the Earth both locally and nationally. This affiliation opens the doors for involvement with PRI and the Museum of the Earth to the entire Cornell University community.

To show our appreciation to our many constituents PRI and the Museum of the Earth hosted a number of events. On October 1, 2004, we gathered to celebrate the generosity of our community with members, friends and constituents for the Museum's first birthday. Staged in the gingko and ice age gardens, guests toured the Museum, chatted with new and old friends, and enjoyed the cello music of Hank Roberts. PRI Board of Trustees had an opportunity to meet and mingle with our Society Members and institutional friends at the Fall Gala Dinner. PRI was proud to be the first Ithaca organization to celebrate Darwin Day. We gathered with over 100 PRI and Museum members, donors and friends to commemorate Darwin's Birthday on February 12, 2005.



PRI would like to thank the following donors who gave to our *Annual Fund* from **July 1, 2004 through June 30, 2005:**

UNRESTRICTED GIFTS

The Devonian Society (\$5,000+)

Anonymous
Atlantic Philanthropies
Warren Allmon & Jennifer Tegan
Philip Bartels & Susan Stappers
Harry & Kitty Lee
D. Jeffrey Over & Jenny Leong
John A. Pursley
Constance Soja
Arthur & Marcia Waterman

The 1932 Society (\$1,932-\$4,999)

J. Thomas Dutro, Jr.
Shirley Egan & Robert Wanner
Peter Stifel
James & Lisken Cordes
Patricia & Tom Davis
Susan Ettinger
Mack & Carol Travis

The Gorges Society (\$1,000-\$1,931)

Donald Bartel
Jill Burlington & Martin Lasskorn
Robert Horn, Jr. & Joan Horn
Mark & Mickie Jauquet
David Jones
Robert Linsley
John Moynes
Edward B. Picou, Jr.
Thomas Whiteley

Barbara Page Tiles (\$1,000)

Larry Baum tile # 88
Thomas and Constance Bruce (tiles not yet chosen)
Jill Burlington (tile not yet chosen)
CircleLink Fund tile # 394
James Cordes tile #296
Pam & Jeremy Crigler tile #3 and #4
Tom & Patricia Davis tile #231 (In Honor of Brandon & Ryan Davis) and #292 (In Honor of Simon and Aaron Tobias).
Shirley Egan tiles #102 and #103
Russell Fuller tile #378
Harry Lee tile # 253 and #362
Harry Lee 2 tiles (In Honor of Robert Lee)
Harry Lee 2 tiles (In Honor of Henry Theisen)
Joseph Metz (tile not yet chosen)
Barbara Payne tile #260 (In Memory of Edward Babcock Hirshfeld)
Michael Perry, Margot Wellington, Mary Shuford, Michael & Britta Albert
Sanders tile #224 (In Honor of Nancy Rosan)
John Pojeta, Jr. tile # 470
Howard Hartnett tile #67
Anne Schaff tile #351
Constance Soja tile #30, #34, #127, and #218
Julian Smith tile #156
Peter Stifel (tile not yet chosen)
David & Marisue Taube (tile not yet chosen)
Carol Travis tile #536
Arthur Waterman tile # 55 and #56
\$500-\$999
John Allen
Camp-Younts Foundation
Dale Corson

Lucy Edwards
Patricia Haugen
Frank Rhodes
Carolyn Sampson
Armour Winslow
Gene and Jeanne Yarussi

\$100-\$499

Tim and Carolyn Ainslie
Michele Aldrich
Joyce Barney
Paul Benedum
Malcom Bilson
Kenneth & Jan Bruning
James Bugh
Sybil Burger
Albert & Mary Burkhardt
James & Terry Byrnes
Manon-Lu Christ
Lenore Coral
David & Carolyn Corson
David Curtiss
Robert Danielson
Jeff Dean
David & Peggy Dunlop
Jo Ann Earle
Donald Farley
Rodney Feldmann & Carrie Schweitzer
Douglas Firchen
Robert & Barbara Foote
Ben Franklin
Steve & Kathy Garner
M. Keefe Gorman
George Gull & Nancy Potter
Carole Hickman
Diane Hillmann
Walter & Bobbie Hodge
F.D. Holland
Richard Hutcheson
Mary Jaffe
Andre Jagendorf
Teresa Jordan
Peter Katzenstein
W. Keith Kennedy
James & Heidi Larounis
Gwen Lubey
Martin Luster
Jay Marks
Harriet Moeller
Susan Murphy & Gerald Thomas
Richard & Olive Phelan
Walter & Joan Relihan
Nelson Ripley
Mr. & Mrs. Carroll Rikert
Jean & Elizabeth Rowley
Faust & Charlene Rossi
Barry & Rita Rothfeld
Karl-Heinz & Ursula Russ
Andrew & Rosemarie Sciarabba
Arthur & Charlotte Shull
Raman Singh
Jacqueline Smith
James & Simone Sorauf
Jeanne Sullivan
Roger Thomas
Andrea Wetherbee

Up to \$99

Gina Albi
Charles & Gwen Aquadro
Steven Baumeister
Barbara Bedette
Bret Bennington
John & Sophia Bezirgianian
Arthur & Donna Bloom

Arlene Bradshaw
David Brittain
Ed & Carlyn Buckler
Richard & Mary Frances Byrd
Samantha Castillo-Davis
Jackie Cassaniti
Nancy & Brad Corbitt
Robert Corretore
H. Allen & Jane W. Curran
Marjorie Decker
Norma & Frank Del Giudice
Charles & Charleen Dimmick
Ginger Dunlap-Dietz
Walter & Edna Federer
Vagn Flyger
Karen Goodman
Jim Haight
Margaret Hampson
John Harper
Juris & Elly Hartmanis
Robert & Margaret Hendricks
Christopher Henley
John Hermanson & Lynn Swisher
Robert Horn, Sr. & Josephine Horn
Jean Houghton
James Houser
Garry & Mary Revoir Jones
Marilyn Kane & Donna Twardowski
Stephen Kaiser
William Kara
Charles Kehler
Patricia & Jonathan Kelley
Kenneth Kennedy
Dooley Kiefer
Karen Kleinspehn & Eric Mohring
Donald Kress
Neil Landman
Donald & Janet Lein
Allyn & Barbara Ley
Randy & Terry Marcus
Peter & Ann Martin
James McConkey
Erin McEwen
Frank & Marg McKinney
Peter P. & Jennifer McLaughlin
Robert Milici
David & Helen Morey
James Morin & Myra Shulman
Barbara Morse
Nancy Munkenbeck
Tom & Carolyn Neal
Gail Osberg
Rosemarie Parker & Sol Gruner
Ann & Jack Pavia
Jane Peck
William & Lois J. Pitt
Michael & Linda Pratt
Mark Roeder
Frank Rose
James Rothenberg & Mariana Wolfner
John Rudan
David Shmoys
C. Daniel Shulman
Joan Siedenburgh
Ronald Somogyi
Dale Springer
John & Sally Steinmetz
John Deborah Strong
Kenneth & Mary Lou Upham
Anthony & Rebecca Verdi
James & Louise Watson
Beverly & Gary Webster
Ruth Windmuller
Joel & Cathy Zumoff

Corporate and Organization Gifts

American Geological Institute
Cayuga Service Company
Communiqué Design and Marketing, Inc.
Cornell Alumni Association of the Ithaca Area
Elmira City Club
Emerson Power Transmission
Harris Beach, LLP
HOLT Architects, P.C.
Igive.com
Maxie's Supper Club
Mid America Paleontology Society
Paleo-Data, Inc.
Sciarabba Walker & Co., LLP
Terrestrial Environmental Specialists, Inc.
Tompkins County Medical Association
United Way of Tompkins County
University Sand and Gravel
Warren Real Estate
Wegmans

Foundation Support

American Association of Petroleum Geologists Foundation
Atlantic Philanthropies
Citigroup Foundation
Childress Foundation
Gannett Foundation
National Science Foundation
Geoscience Education Program
National Science Foundation Informal Science Education Program
New York State Council for the Arts
Park Foundation
Robert G. and Jane V. Engel Foundation
Tompkins Charitable Gift Fund
Tompkins County Tourism Grants Program
Walmart Foundation

Gifts-in-kind

Bond, Schoenck & King, PLLC
Demetra Brodsky
Carlyn Buckler
J. Thomas Dutro, Jr.
South Hill Corp.
Emerson Power Transmission
HOLT Architects, Inc.
Stuart Lewis
David Taube
Serendipity
Solstice Group
James Sorauf
The Piano Guys
Virginia Utermohlen-Lovelace

Building Equity

On December 31, 2004, the Paleontological Research Institution finished our Capital Campaign to build the Museum of the Earth after raising \$8.1 million. PRI would like to thank the following donors who not only made this project successful, but also facilitated excellence:

Gifts of \$1,000,000 +

The State of New York
The Park Foundation
Anonymous

Gifts of \$100,000 +

Borg Warner Morse Tec
Jay & Anita Hyman
J.M. McDonald Foundation
Peter Stifel
Tompkins County
NYSERDA

Gifts of \$50,000 +

The Bartels Family
J. Thomas Dutro Jr.
Alice Haider
Harry A. Leffingwell
National Science Foundation
John A. Pursley
Tompkins County Foundation
Tompkins Trust Company
William P.S. Ventress
Weiss-Manfredi Architects

Gifts of \$25,000 +

Paul G. Benedum Jr.
Esther Bondareff
Shirley Egan & Robert Wanner
Eleanor Bayley Estate
Harry G. Lee
M & T Bank
NYSEG
Triad Foundation
Raymond & Margaret Van Houtte
Arthur & Marcia Waterman
Wegmans

Gifts of \$10,000 +

Anonymous
Robert Allan
Warren Allmon & Jennifer Tegan
Beverly Baker
David & Joy Barr
Larry & Trudy Baum
Jack & Maura Bird
Percy Browning
Cargill, Inc.
The CBORD Group, Inc.
Larry & Mary Helen Cathles
CFCU Community Credit Union
Kenneth Ciriacks
Citadel Communications
The Computing Center
Robert & Vanne Cowie

Michael & Carmella Degenhart
Nelson B. Delavan Foundation
Discovery Channel
Eagle Broadcasting
Thomas & Maria Eisner
Emerson Power Transmission
John & Francille Firebaugh
David & Mary Flinn
John Fontana
James Gardner & Michael Esposito
Patricia Haugen
Walter & Bobbie Hodge
Robert & Joan Horn
Ithaca Journal
Ithaca Rotary Club
Susan Murphy & Gerald Thomas
New York State Council for the Arts
Gil Norris
Park Outdoor, Inc.
Edward B. Picou
John & Mary Lou Pojeta
Marion Raymond
Megan Shay
Mary Shuford
Constance Soja
Sidney Tamarin Trust
David & Marisue Taube
Time Warner of Ithaca
Barbara K. Toomey
Keren Wells
Thomas Whiteley

Gifts of \$5,000 +
Bruce Abbott & Linda Blossom
Robert Abrams
Merle Adelman
John Allen
Joseph & Vauda Allmon
David Banfield
Tom Besemer
James M. & Lisken Cordes
William & Ruth Crepet
Susan Ettinger
Robert & Barbara Foote
M. Keefe Gorman
Jane Gray Trust
Howard P. Hartnett
Integrated Acquisition and Development
Ithaca Times
W. Keith Kennedy
William Landstrom
Laurie Linn & Eric Lindstrom
Robert M. Linsley
William Mullestein
Francis Paolangeli
Paula Peter Sidle
Robert Sneider
Mack & Carol Travis

Gifts of \$5,000 +

Bruce Abbott & Linda Blossom
Robert Abrams
Merle Adelman
John Allen
Joseph & Vauda Allmon
David Banfield
Tom Besemer
James M. & Lisken Cordes
William & Ruth Crepet
Susan Ettinger
Robert & Barbara Foote
M. Keefe Gorman
Jane Gray Trust
Howard P. Hartnett
Integrated Acquisition and Development
Ithaca Times
W. Keith Kennedy
William Landstrom
Laurie Linn & Eric Lindstrom
Robert M. Linsley
William Mullestein
Francis Paolangeli
Paula Peter Sidle
Robert Sneider
Mack & Carol Travis

Gifts \$1,000+

David & Nancy Ahlers
American Wick Drain Corporation
Anonymous
Paul Banfield
Robert & Nancy Barlow
Bill & Nancy Bellamy
Mary Berens & Paul Feeny
James & Terry Byrnes
K.B. Cady
Camp Younts Foundation
Carlisle, Inc.
Cayuga Crushed Stone
Ciaschi, Dietershagen, Little, Mickelson & Company, LLP
Thomas & Lauren Colbert
Concept Systems, Inc.
George & Diane Conneman
Dale & Nellie Corson
Harold & Holly Craft
Dave & Marian Cutting
Patricia Davis
Lavern & Lenore Durkee
Lucy Edwards
Susan Ettinger
Howard & Erica Evans
Richard Farr
Finger Lakes Stone Co., Inc.
Vagn Flyger
Russell Fuller
Beth Fuller
Grigor & Carolyn Grigorov
Stuart Grossman
M.G. Harasewych
Jerome & Joan Hass
HOLT Architects, P.C.
Honen and Wood, P.C.
Robert Horn
Bonnie Howell
Mark Jauquet
Jewish Communal Fund
Patricia A. Johnson
Patricia Kelley
Donald Kress
Louis Lowenstein
Maxie's Supper Club
Christopher Maples & Sarah Marcus
Amy McCune & David Winkler
Arthur & Virginia McCune
Fred & Tibby McLafferty
Daniel & Jean McPheeters
Joseph & Emily Metz
William A. Oliver Jr.
Barbara Page & Richard Root
Edward Page
Chris & Judith Pastel
Barbara Payne
Pinnisi & Anderson, P.C
Albert Podell
Frances Ramin

Gifts < \$1000

Silvia Abbiati
Kraig & Dolores Adler
Michele & Mark Aldrich
John Alf
Alternatives Federal Credit Union
Danielle Ameen
Paul Anderson
Charles Aquadro
Jerome & Joan Hass
AutoDesk
John Babcock
Jacoba Baker
Kavita Bala
Nancy & Roger Battistella
Kevin & Jacqueline Bangs
John & Lucy Barcelo
John Barney
Louise Barr
Bruce Beem-Miller
Paula Bensadoun
Barbara Berthelsen
Alan Biloski
Malcom & Elizabeth Bilson
Arthur & Donna Bloom
Richard Boardman
Elizabeth Bolgiano
Borders Bookstore, Inc.
Arlene Bradshaw
Doug & Karen Brazell
Carlton Brett
Bennett Brett
Michael & Demetra Brodsky
Meryl Brodsky
Anna Irene Brown
James Brown

James & Helen Rosburg
George & Kay Ross
Carolyn Sampson
Anne Schaff
Sciarabba Walker, LLP
Andrew Sciarabba
Julian Smith
James Sorauf
Paul Steiger
John Steinmetz
Edward Wolf
Jeanne Sullivan
Thayer Appliance
Peter Thomas
Tompkins Cortland Community College
Charles & Nancy Trautmann
William & Mary Kane Trochim
Rosemary & Jane Tuttle
Gregory Wahlman
Warren Real Estate
PW Wood Insurance Agency
Edward Wolf
Gene & Jeanne Yarussi
William Zikakis

Gifts < \$1000

Silvia Abbiati
Kraig & Dolores Adler
Michele & Mark Aldrich
John Alf
Alternatives Federal Credit Union
Danielle Ameen
Paul Anderson
Charles Aquadro
Jerome & Joan Hass
AutoDesk
John Babcock
Jacoba Baker
Kavita Bala
Nancy & Roger Battistella
Kevin & Jacqueline Bangs
John & Lucy Barcelo
John Barney
Louise Barr
Bruce Beem-Miller
Paula Bensadoun
Barbara Berthelsen
Alan Biloski
Malcom & Elizabeth Bilson
Arthur & Donna Bloom
Richard Boardman
Elizabeth Bolgiano
Borders Bookstore, Inc.
Arlene Bradshaw
Doug & Karen Brazell
Carlton Brett
Bennett Brett
Michael & Demetra Brodsky
Meryl Brodsky
Anna Irene Brown
James Brown

Edwin Buck
Al & Mary Burkhardt
Marjorie Burns
Carol Bushberg
Richard Byrd
Jean Caporal
Laura Carey
Sandy Carlson
Helen Carlson
Jackie Cassaniti
Samantha Castillo-Davis
Chris Clark
Alan Cody
Carl & Suzanne Cohen
Royal & Susana Colle
Marguerite Conan
Lenore Coral
Cornell Alumni Association of the Ithaca Area
Kenton Cornish
Jonathan Corson-Rikert
David & Carolyn Corson
Sara Cucinotta
Norman Culver
Nancy Cummings
Connie Curnier
Charles Daghlian
Marguerite Darsie
James F. & Luisa Davis
Tom Davis
Jeff Dean
Joan & Tob De Boer
Jack Decker
Marjorie Decker
Bruce Dew Jr.
Donald & Sylvia Dickinson
Joline DiGiacomo
David Dilcher
Charles Dimmick
Frank & Barbara DiSalvo
Dryden Mutual Insurance
David Dubow
Graham Duncan
David & Peggy Dunlop
Richard Durst
James Egan
Mark & Paula Eisner
Lori Emmons
Jennifer Engel & Larry Young
Judy Epstein
Eugene Erikson
Eric & Anne Evans
The Evens
Donald Farley
Walter Federer
Rodney Feldmann
Michelle Felice
J. David Ferris
Richard Fillon
Ben Franklin
John, Erica, & Harriet Furey
Steven Furey
Margaret Furey
Marie Gast
Stephen Garner
Jacob Gillette
Brian Glenister

Richard Goldstein
Muriel Goldstein
Elizabeth Gordon
Fred & Fairfax Gouldin
Reid Graham
Jill Gravante
Steve Gray
Brian Greenough
George Gull & Nancy Potter
Nelson Hairston
Bruce Hall
Margaret Hampson
Peter & Mary Harriott
The Heights Café
Chris Henley
John Hermanson & Lynn Swisher
Carman Hill
Roger & Suzanne Hinderliter
Richard Hoare
Carol Holland
F.D. Holland
Thomas & Karen Horn
Kenneth A. Horowitz Family Foundation
Jean Houghton
Ronald Hoy
Karla Hubbard
Richard Hutcheson
Wanda Infantaolino
Ithaca College Television
Jacober Family
Andre & Jean Jagendorf
Larry Jensen
Sylvester Johnson IV
Garry Jones
Carol Kammen
Jonathan Kanter
Paul & Katherine Karakantas
Peter & Mary Katzenstein
Charles Kehler
Meg Kerr
Tom Kieffer
Mike King
Karen Kleinspehn
Dexter Kozen
Meredith Kusch
Nick Lambrou
Neil Landman
Larkin Insurance
Gregory Lawrence
Lillian Lee
Donald Lein
Peter Lepage
Antoinette Levatic
Alan Leviton
Allyn Ley
Bruce Lieberman
Jason Lillegraven
Jean Locey
Howard London
Gwen Lubey
Peter & Beth Marks
Randy & Terry Marcus
William Maxwell
David Martellock
Peter & Ann Martin
Paul & Kate Maynard

Patricia McClary
Ben McKee
Lois McManus
Lynne Metzgar
Mid-America Paleontology Society
Jon Minikes
Barbara Mink
Amy Moe
Harriet Moeller
Barbara Morse
Phil & Donna Mott
Nancy Munkenbeck
Henry Munger
Grover Murray
Andrew Myers
Corrine Myers
Bill Myers
Robert Nafis
Michael Nault
Amber Neal
National Earth Science Teachers Association
Margaret Nichols
Jerome Nosanchuk
William Ober
Neil Olver
Gail Osberg
Paleo-Data Inc.
Rosemarie Parker
Lawrence C. Parmelee
Stacey Payette
Michael Perry
Richard Phelan
Jotham & Carol Pierce
Peter Pkatzenstein
Paul Ramstad
Susan Reisbord
Peter Rider
Bridget Rigas
Carroll Rikert
Peter Rinaldo
Nelson & Marian Ripley
Edward Roberts
Franklin & Margaret Robinson
Frances Rogalsky
Ed Rogers
Frank Rose
Rob & Brenda Ross
Faust & Charlene Rossi
Barry Rothfeld
James Rothenberg
Jean Rowley
Rourke Family
John Rudan
Karl-Heinz & Ursula Russ
Scott & Janet Russell
Patrick Ryan
Daniel Sass
LouElla Saul
Molly Sax
Anne Schaff
Lisa Schleelein
John Seeley
Security Mutual Insurance Company
Scott & Wendy Selbach
Michael & Jan Shay
Margaret Shepard

Laura Sherman
David Shmoys
Arthur & Charlotte Shull
Joan Siedenburgh
Silvia Sinclair
Raman Singh
Elliott Smith
Jackie Smith
Mark & Lisa Smith
Jeffrey Snedeker
Ronald Somogyi
Sharon Sonnleitner
Louise Stange-Wahl
Francis Straub
Carl Stock
June Szabo
Terran Tasci
Thomas Taylor
Gregor & Kristin Teusch
Larry & Alice Thayer
Gray Thoron
Kevin Thurston
The Tinker Family
Tiohero Tours
John Trubisz
Norman Turkish
Gail & Bernie Uebelhoer
United Way of Tompkins County
Norman Vallette
Elizabeth Vikre
Volker Vogt
Elizabeth Walker
Norma Walsky
Helen Wardeberg
Jean Warholic
Louise Watson
Philip Webb
Cathy & Mike Whalen
Tom Wheat
Natalie Whelan
Lisa Westcott
Steffi White
Christopher Whyland
Armour Winslow
Karl Wilson
Peter Wolczanski
Geoff Wright
Robert & Giveta Young
Marguerite Zeiner
Joel & Cathy Zumoff

In honor of our Visionary...

Since the passing of our dear friend and personal pioneer Raymond Van Houtte in August 2004, the Paleontological Research Institution has received gifts to honor him as the person responsible for the vision behind the building of the Museum of the Earth. We would like to offer sincerest gratitude to the following donors who gave to honor Ray, who without his ability to see, believe and dream we would not be where we are today:

Robert and Nancy Barlow
Eugene Erickson
Howard Hartnett
John Pursley
Park Foundation
Triad Foundation

Membership

Our membership program focused not only on gaining new members but retaining current members. Through a membership survey and the creation of Unearthed our monthly electronic newsletter PRI and the Museum of the Earth strived to increase communication between members and the institution. These efforts increased membership by 60% from July 1, 2004 to June 30, 2005.

Membership benefits include free admission to the Museum of the Earth, a yearly subscription to American Paleontologist our natural history magazine, advanced notice and exclusive invitations to special events and exhibit openings as well as discounts on public programs, field trips and museum store merchandise. For more information about membership call 607-273-6623 extension 10.

As of November 21, 2005, PRI and the Museum of the Earth had the following 900 members:

Life Members

Bruce Abbott & Linda Blossom
Robert Abrams
Merle Adelman
Michele & Mark Aldrich
John Allen & Ann Callaghan
Warren Allmon & Jennifer Tegan
Joseph & Vauda Allmon
John Armentrout
Gordon Baird
Beverly Baker
Christina Balk
Chris Ballentine
David Banfield
David & Joy Barr
Henry & Nancy Bartels
Philip Bartels & Susan Strappers
Larry & Trudy Baum
Bruce & Carri Bell
Paul Benedum
John Bird & Maura
Weathers
Warren Blow
Richard & Phyllis Boardman
Hans Bolli
Esther Bondareff
David Bottjer
Al Bridell
James Brown
Percy Browning
James & Terry Bugh
John David Bukry

Sybil Burger
Lyle Campbell
John Carter
Larry & Mary Helen Cathles
Kenneth & Linda Ciriacks
Emily CoBabe
James & Lisken Cordes
Sarah Cormier
John Cottrell
Bob & Vanne Cowie
William Crepet
Thomas Cronin
Michael & Carmella Degenhart
Nelson Delevan, Jr.
John DuPont
Christopher Dutro
Susan Dutro
J. Thomas & Nancy Dutro, Jr.
Shirley Egan & Robert Wanner
Anton & Joan Egner
Thomas & Maria Eisner
J. Mark Erickson
Richard Erickson
Susan Ettinger
John & Francille Firebaugh
David & Mary Flinn
Joanne Florino
Robert & Barbara Foote
Eugene Fritsche
James Gardner & Michael Esposito
Ernest Gilmour
Keefe & Susan Gorman
Lee Gray

Steven Hageman
Alice Haider
M. G. Harasewych
Anita Harris
Howard Hartnett
Patricia Haugen
Carole Hickman
Walter & Bobbie Hodge
Robert Hoerle
John & Beverly Hoffman
F. D. & Margine Holland
Bob & Joan Horn
Frederick Hotchkiss
Jay Hyman
David Jablonski
Richard Johnson
Patricia Johnson & Roland Lynch
David Jones
Peter Jung
Tomoki Kase
Jonathan & Patricia Kelley
W. Keith Kennedy
David Kerr
William & Kathleen Kier
Karen Kleinspehn & Eric Morhing
William F. Klose
Jiri Kriz
Ralph L. Langenheim
Harry & Kitty Lee
Harry & Doris Leffingwell
Egbert G. Leigh Jr.
Gerard A. Lenhard
David Linsley

Robert Linsley
William G. Lyons
Michael Manfredi & Marion Weiss
Christopher Maples & Sarah Marcus
Louie Marincovich
Donald McJunckin
Peter P. & Jennifer McLaughlin, Jr.
William Miller, III
Thomas M. Missimer
William Mullestein
Susan Murphy & Gerry Thomas
Paul Myrow
Shuji Niko
Hiroshi Noda
Gilbert Norris
Sakae O'Hara
William Oliver
Kevin Padian
Peter Jung
Adelaide Park Gomer
Roy Park, Jr.
John Peel
Samuel Pees
Bill & Mary Anne Perks
Richard Petit
Edward B. Picou, Jr.
Robert Pohowsky
John Pojeta, Jr. & Mary Louise Pojeta
John Pope
Phil & Rochelle Proujansky
John Pursley
Robert & Marion Raymond
Anthony Reso



Harold Rollins
Arnold Ross
LouElla Saul
John Scherer
Judith Schiebout
Roger Segelken
Bruce & Nancy Selleck
Mary Shuford
Paula Sidle
Edward Slagle
Robert Sloan
Constance Soja & Brian White
Noel Spitznagel
David Stansbery
John & Sally Steinmetz
Andrew Stifel
Katherine Stifel
Peter Stifel
Carl Stock
Svend Stouge
David & Marisue Taube
Barbara Toomey
Mack & Carol Travis
Jorge Valdes
Leigh Van Valen
William & Jeannine Ventress
Geerat & Edith Vermeij
Emily Vokes
Gregory Wahlman
Thomas Waller
Albert Warren
Bryan Warren
Arthur & Marcia Waterman

Gary & Beverly Webster
Daniel Wegman
Keren Wells
Thomas & Ellen Whiteley
Ralph Willoughby
Armour Winslow
Gary & Sharon Woloszyn
Thomas Yancey

Donor Members

Lenore & Vern Durkee
Howard & Erica Evans
Karl & Anna Wilson

Friend Members

Lee Corbin
Richard Fillon
Irby & Heidi Lovette
John & Cheryl Rigas

Charter Members

John & Elaine Alexander
Glenn & Elizabeth Allen
Nan Arens & David Kendrick
Loren Babcock
William & Andrea Barnett
Rollin & Merry Jo Bauer
William Bemis
Linda Blossom & Bruce Abbott
William & Heather Brice

Liese Bronfenbrenner
Connie Bruce
Edward Buckley
Albert & Mary Burkhardt
Richard & Mary Frances Byrd
Ingrid Center
George Conneman
Thomas Cowan
Harold Craft
Carol DeGaray
Frank DiSalvo
Lenore Durkee
Natalia Emlen
Chris Engst
Eugene Erickson
Jim Fogel
Thomas Genow
Tom Gerow
Dan & Karen Governanti
Linda Grace-Kobas
Michael Griswold
Peter Harries
Ellen Harrison
Richard Harrison
Juris Hartmanis
Dede Hatch
Gerard Hawkes
Diane Hillmann
Donald Hoskins
Bryan Isacks
Ralph Jones
Graham Kerslick
William Kirchgasser

John Krout
Adam Law
Edward Lawler
Fred Leff
Richard & Mary Frances Byrd
Vince Mehringer
Robert Nafis
John Neuman
Cal Organ
Joan Ormondroyd
Barbara Page
Chris & Judith Pastel
Mason Peck
Richard Phelan
Sandra Podulka
Theresa Ponader
Michael Pratt
Ed Przybylowicz
Hunter & Elizabeth Rawlings
Peter Rinaldo
Franklin Robinson
Yvonne Rodney
Ellie Rosenberg
Gary Rosenberg
Elliot Rubenstein
Peter Salmon
Anne Schaff
David Schuller
Dan Schwarz
Anne Shelton
Kirk Sigel
James Spero
Bruce Stark

Kate Supron
Dennis Swaney
William & Mary Kay Trochim
Virginia Utermohlen Lovelace
Charles VerStraeten
Vanessa Wagner
Robert Weber
Michael Whalen
Peter Whitson
William Winkky
Gene & Jeanne Yarussi

Family Members

John Abel
Ellen Abrams
Rachel Ainslie-Hamblin
Eric Alani
John Alf
Ole Amundsen
Renee Aubry
Jacoba Baker
Rebecca Baker
David Ball
Michelle Bamberger
Curtis Banta
Thomas Bantel
Lorraine Bard
Dorothy Barr
Jerold Bastedo
Laura Beck
Franklin Becker
Michelle Bednarek
Robert Belle
Bret Bennington
Michelle Berry
Barbara Berthelsen
John Bezirgianian
Katrina Binkewicz
Amanda Birch
Margaret Bleiler
James Boodley
Bryan Boosz
Lynn Boruchowitz
Robert Bouchard
Mary Bouchard
Ben Boynton
Peter Brelochs
Barbara Brenner
Anna Irene Brown
Nathaniel Brown
Elizabeth Brown
Larry Brown
Jonathan Bryan
Ann Budd
Dorothy Buerk
Dan Burgevin
Richard Burlew
Mattison Burt
James Busanus
Richard Byrd
Suellen Cabe
Bingham Cady
Joeseph Caezza
Tami Calleo
Burt Carter
Trent Caster
Edmund Charlesworth
Donald Chesnut

Ludwik Chobot
Manon-Lu Christ
Tim Christensen
Roy Coats
John Colagrande
Luke Colavito
Donald Coleman
Therese (Tree) Cook
Nancy Corbitt
Esther Cornell
David Corson
Martha Costello
Denise Costich
Richard Couch
Ray Craib
Anne Culp
Mary Ellen Cummings
Allen Curran
B.N. Danforth
Beverly Danielson
Robert Dean
Donna Dempster-McCLean
Louis Derry
Noel Desch
Jerold DeSimone
Helene Dillard
Charles Dimmick
Barbara Dimock
Kosmas Diveris II
Jean-Francois D'arcy
Beth Dockstater
Ronald Douville
Ernest Dumas
James Dunn
Reed Durand
Tom Dzwinel
Elizabeth Earle
Jen Eastwater
Samuel Edwards
Lisa Elliott
Michael Emmart
Larry Endo
Briotta Engram
Carole Ersler
John Fahs
Elizabeth Falcao
Rudy Fedrizzi
Rodney Feldmann
Eveline Ferretti
Claire Ferris
David Field
Harold Figueroa
Dorian Fine
Thomas Fisher-York
John Fitzpatrick
Paul Flamm
Alexander Flecker
Donna Fleming
Karl Flessa
Anne Fornasiero
Merrill Foster
Bryan Foster
Brian Fowler
Claire Fox
B. Harrison Frankel
Dennis Frederick
Kurt Fristrup
Glenn Galbreath
Jan Garvey

Walter Gates
Ramadevi Gavirneni
Jamie Gelinas
Frank Genovese
Richard George
Theresa George
Steven Gerdes
Maureen Getman
Claire Gilbert
Cole Gilbert
David Glasner
Nancy Goldberg
Synnova Gooding
Karen Goodman
Jim Graney
Anne Gravante
Eric Greenburg
Lesley Greene
Charles Greene
Edward Grobelny
Lindsey Groves
Holly Gump
Neeraj Gupta
Nelson Hairston
Christian Haller
David Halpert
John Handley
John Harper
Elisabeth Harrod
Laurie Hart-Nutter
Joan Hass
Sarah Hatcher
W. Graham Heaslip
Amy Heller
Evelyn Hellstern
Martin Hempstead
Christopher Henley
John Hermanson
Matthew D. Herz
Peter Herzberg
Osamu Hino
Justin Hjortshoj
Richard Hoare
Linda Homco
James Houser
Valerie Houtenville
Karla Hubbard
David Huff
Tim Huffaker
Nigel Hughes
Byung-Ryool Hyun
Eduardo Inigo-Payne
Conrad Istock
Von Reinhold Jamesson
Mickie Jauquet
Larry Jensen
William Johnson
Brian Johnson
Robert Johnston
Cleopatra Jones
Maurice Kaasa
Thomas Kammer
Darren Kannus
Bill Kappel
William Kara
Michael Karee
J. Michael Keller
Don Kelley
Mark Kilmer

Susan Klofak
Elizabeth Koch
Jeffrey Kocian
Jung-Han Koo
Ted Kordela
Charles Kremer
Ruth Krumhansl
Ron LaDieu
Joseph Lalley
R. Carolyn Lange
Andy Glasner
Lennon-Ellis Family
Carl Leopold
Ofer Leshed
Antoinette Levatich
Allyn Ley
Anne Littlestone
Howard London
John Losey
Anne Lutz
Robert Mackenzie
Kathleen Mackenzie
Virginia Magee
John Maliwacki
Rick Manning
Andrew Marietta
Gigi Marks
Ross Martin
Peter Martinez
Jonathan Mauser
Joseph Mayko
Brian McAninch
Amy McCune
Ronald McDowell
Erin McEwen
George McGhee
Daniel Mckee
Frank McKinney
Jean McPheeters
Robert Meade
Steve Melcher
Eleanor Merrifield
Ashley Miller
William Morgan
James Morin
Steven Moskowitz
Terri Myers
Benjamin Nichols
Karen Nordquist
Jan Novello
John Ober
Dan Orcutt
Bruno Orsi
Karen Osburn
Christian Otto
Michele Palmer
Alan Parrish
Ronald Parsley
Ritchie Patterson
Mark Payne
Katy Payne
Robert Peck
Natalya Permykova
Jasmina Petrovic
Donald Phillips
William Pitt
Stewart Pollock
Franz Pomianowitz
Karen Powers

Frederick Pugliese
Maria Rabb
Phil Rach
Gerald Ragan
Joan Ramage
Barbara Regenspan
Walter Reimers
Philip Reiss
Charles Reniff
Marilynn Reycroft
Mariana Rhoades
Susan Rice
Diana Riesman
Lawrence Rigas
John Rigas
Cheryl Rigas
James Riley
Tom Rockwell
Robert Rose
Thomas Rossbach
Jean Rowley
Gloria Royer
Steve Ruoff
Karl-Heinz Russ
Nerissa Russell
Johnathan Russell-Anelli
Joe Ryan
Michael Sandritter
Howard Schenker
Carole Schiffman
Rebecca Schwed
Cheryl Scott

Don Shardlow
Michael Shay
Mitchell Sheiman
Thomas Shelley
Jerry Shing
Roger Sibley
Joan Siedenburg
Nancy Siegele
Signer/Raffe Family
John Sikora
Noall Silvester
Sheryl Sinkow
John Sipple
Keith Slater
Roger Smith
Suzanne Snedeker
Stacy Snyder
Ronald Snyder
Alexander Solla
Leah Solla
Johanna Sparks
Mirmie Stapleton
George Stephens
Sharon Stevans
Don Stewart
William Strauss
Jeanne Sullivan
Theodore Szymanski
Joel Tabb
Philip Tavelli
Raymond Terepka
James Theler

Roger Thomas
David Thompson
Karen Thurston
Ann Tobey
Mark Tompkins
Charles Trautmann
Alexander Travis
Chris Tudan
Mary Underhill
Donna Updike
Gurdon Van Hamlin
Margaret Van Houtte
Joann Vanderzee
Thomas VanDerzee
Barbara VanLiew
Robert Vanrenesse
Anthony Verdi
Claudia Vos Lewenstein
Mary Ann Vujakovich
Cindy Wagner
James Reid Waring
Christopher Way
Ken Welch
Sherry Weller
Cherie Wendelken
Ronald West
Abby Westervelt
Andrea Wetherbee
William White
Daniel Wixted
Karen Wizevich
Gary Wojcik

George Wolga
William Young
Mark Zabel
Paul Zell
Francis Zimmer
Dorothy Zimmer
Jeffrey Zorn
Annette Zygarowicz

Agency Members

Boys and Girls Club
Cornell Cooperative Extension
Family & Children's Services
George Junior Republic
Madison-Cortland ARC
Seneca-Cayuga ARC
Syracuse Gem & Mineral Society
Tompkins County Mental Health
Youth Advocate Programs

Individual Members

Richard Aerni
Lisa Amati
David Avery
Paul Babwin
Brian Bade
Stanley Balducci
Frederick Barken
Barbara Bedette
Frank Bennett, III



Lisa Berkowitz
 Robert Blodgett
 Judith Ruth Bloom
 Susan Blumenthal
 Phillip Bonn
 Margaret Brady
 Terry Brawner
 David Brittain
 Phillip Burgess
 Dan Burgevin
 Robert Burns
 Timothy Burns
 David Campbell
 Arlene Castleman
 Cheryl Chalmers
 Jennifer Chidsey
 Sharon Corbitt
 Robert Corretore
 Sheila Dean
 Norma Del Giudice
 Grenda Dennis
 Peter Depew
 David Dockery
 Miranda Druso
 Ian Dunne
 Lucy Edwards
 Frank Etnensohn
 Dewi Evans
 Susan Foster
 Mark Frye
 Richard Gentile
 Michael Gibson
 Doug Glazier
 James Hagadorn
 William Hamlin
 Jonathan Harrington
 Beth Harvey
 David Heerwagen
 Jonathan Hendricks
 Robert Hutchens
 Linda Ivany
 Claudette James
 Dick Jones
 Michael Karpovage
 Joseph Kchodl
 Eugene Kindt
 Donald Kirkpatrick
 Rhoda Knight Kalt
 Christine Kola
 James Konecny
 Kumi Korf
 Gillian Krag
 Donald Kress
 Bruce Lieberman
 Gwen Lubey
 Roy Luft
 Donna Malara-Latella
 Michael Marano III
 Patricia McClary
 Harry McCue
 Mark McMenamin
 Shannon McSurely
 David Meyer
 Timothy Miller
 Arthur Mintz
 Charles Mitchell
 Michael Mongeon
 Jared Morrow
 Carol Murphree
 Corrine Muske
 Vincent O'Donnell
 Irene Offeman
 Jack Oliver
 Brian O'Neill
 Mary O'Rourke
 D. Jeffrey Over
 Susan Parks
 Roy Plotnick
 Nandu Polavarapu
 Peter Potorti
 Garrett Quinn
 Bruce Rabe
 R. Gary Raham
 Carl Ramm
 Phyllis Renzetti
 Charles Rizzo
 Bruce Robertson
 Mary Rodgers
 Joaquin Rodriguez
 Micky Roof
 Stephen Rowland
 Amelia Sauter
 Reginald Scolaro
 John Seeley
 Eric Serritella
 Jirina Shupp
 Sue Smith
 Jacqueline Smith
 Laurie Snyder
 Susan Soboroff
 Buzz Spector
 Michael Stapleton
 Scott Starratt
 George Stone
 Gary Stringer
 Sana Strom
 John Strong
 Harriet Sutherland
 John Tate
 Ed Thomas
 Alfred Traverse
 William Trombley
 Kenneth Upham
 John VanderVeer
 Victor Vere
 Janice Voltzow
 Donald Wagman
 Robert Wasserstrom
 Brian Whiteley
 Bruce Wiley
 Anthony Williams
 Donald Wilson
 Thomas Wood
 John Wood

Student/Senior Members

Edward Austen
 Donald Badman
 Curtis Banta
 Stephen Bauer
 Barbara Bauer
 Stig Bergstrom
 Kayla Bramham
 Louis Budell
 Kate Bulinski

Barbara Caldwell
 Patricia Carden
 Alan Cheatham
 David Clark
 Phoebe Cohen
 Brian O'Neill
 Robert Corretore
 Susan Cotton
 Doris Couch
 Marjorie Decker
 Delores Dick
 Richard Dick
 Richard Digiornimo
 Cecilia Duluk
 Bobbie Engram
 Kenneth Richard Fielding
 Margaret Fraiser
 Virginia Friedman
 Mark Germano
 Brian Glenister
 Bruce Hall
 Edward Hart
 Kathlyn Heaton
 Marty Hirschhorn
 Jean Houghton
 Katherine Houpt
 Mary Jaffe
 Dorothy Jenks
 Thomas Johnston
 Kenneth Kennedy
 James Kirby III
 Gilbert Klapper
 Barbara Lamb
 Neil Landman
 Glenn Long
 Pedro Marengo
 Marguerite McCartney
 James McConkey
 Phyllis McNeill
 David Morey
 Jackie Mott Brown
 Marvin Orlinick
 Ann Pavia
 Jean Ponko
 Robert Post
 Margie Ramsey
 Carl Rexroad
 Zackary Reynolds
 Sean Robson
 Margie Rumsey
 Jane Schmitz
 Mary Lee Seibert
 Joan Siedenburg
 Marjorie Smith
 Morley Smith
 Julian Smith
 Philip David Stillman
 Joseph Sullivan
 Harold Sweet
 Rollin Tillis
 Janet Van Etten
 Robert Wehe
 Ruth Windmuller
 June Wolle
 John Wolle
 Pamela Wright
 Barbara Yale

PRI Subscriber Members

Patricia Allen
 Allen Amerant
 Louise Barr
 Henry Chaney
 Jim Chaplin
 Jim Culberson
 Robert Elias
 Anthony Friscia
 Paul Harnik
 John Jacobs
 John Kohut
 Rob Martin
 Ronald Metzger
 Dennis Mooney
 Michael Nathal
 Kristin Polizzotto
 James Scatterday
 Richard Smath
 David Sonnenberger
 Jonathan Starr
 Margaret Velte

Finance

From the Treasurer

The year ending June 30, 2005 was a transitional year for the Paleontological Research Instituution. During the first full year of the Museum's operation, the Institution entered into an affiliation agreement with Cornell University and concentrated on deepening its connections with the community, as evidenced by increased admission revenue and gifts. However, the Institution incurred a substantial operating deficit for the year. Management and the Trustees have implemented a long term strategy to eliminate the deficit, which includes a significant campaign for major gifts and increased emphasis on grant revenues.

Statement of Activities

	For the Year Ended June 30,	
	2005	2004
UNRESTRICTED NET ASSETS:		
Revenue, gains, and other support		
Grants, contributions, and gifts	\$ 228,516	\$ 62,876
Programs	13,147	32,670
Publications	44,233	35,731
Dues and memberships	26,885	36,225
Museum admissions	104,684	95,546
Merchandise sales, net of cost of goods sold of \$47,158 and \$33,006, respectively	39,035	34,196
Investment Income	5,476	6,263
Gain on investments	14,807	25,854
Other	<u>16,407</u>	<u>5,859</u>
	493,190	335,220
NET ASSETS RELEASED FROM RESTRICTIONS:		
Museum	203,495	1,361,813
Grants	84,577	136,076
Specific Uses	<u>305,568</u>	<u>194,154</u>
	<u>593,640</u>	<u>1,692,043</u>
TOTAL REVENUE, GAINS, AND OTHER SUPPORT	1,086,830	2,027,263
EXPENSES AND LOSSES:		
Payroll and related benefits	619,330	708,382
Publications and printing	48,590	71,947
Building and maintenance	192,265	132,430
Supplies	35,310	30,451
Postage	11,895	25,216
Professional Fees	25,007	104,501
Program related expenses	---	350
Travel and workshops	12,188	22,211
Depreciation and amortization	399,551	400,100
Interest expense	280,991	239,250
Other	<u>149,356</u>	<u>142,808</u>
TOTAL EXPENSES AND LOSSES	<u>1,744,483</u>	<u>1,877,646</u>
CHANGE IN UNRESTRICTED NET ASSETS	\$ (687,653)	\$ 149,617

